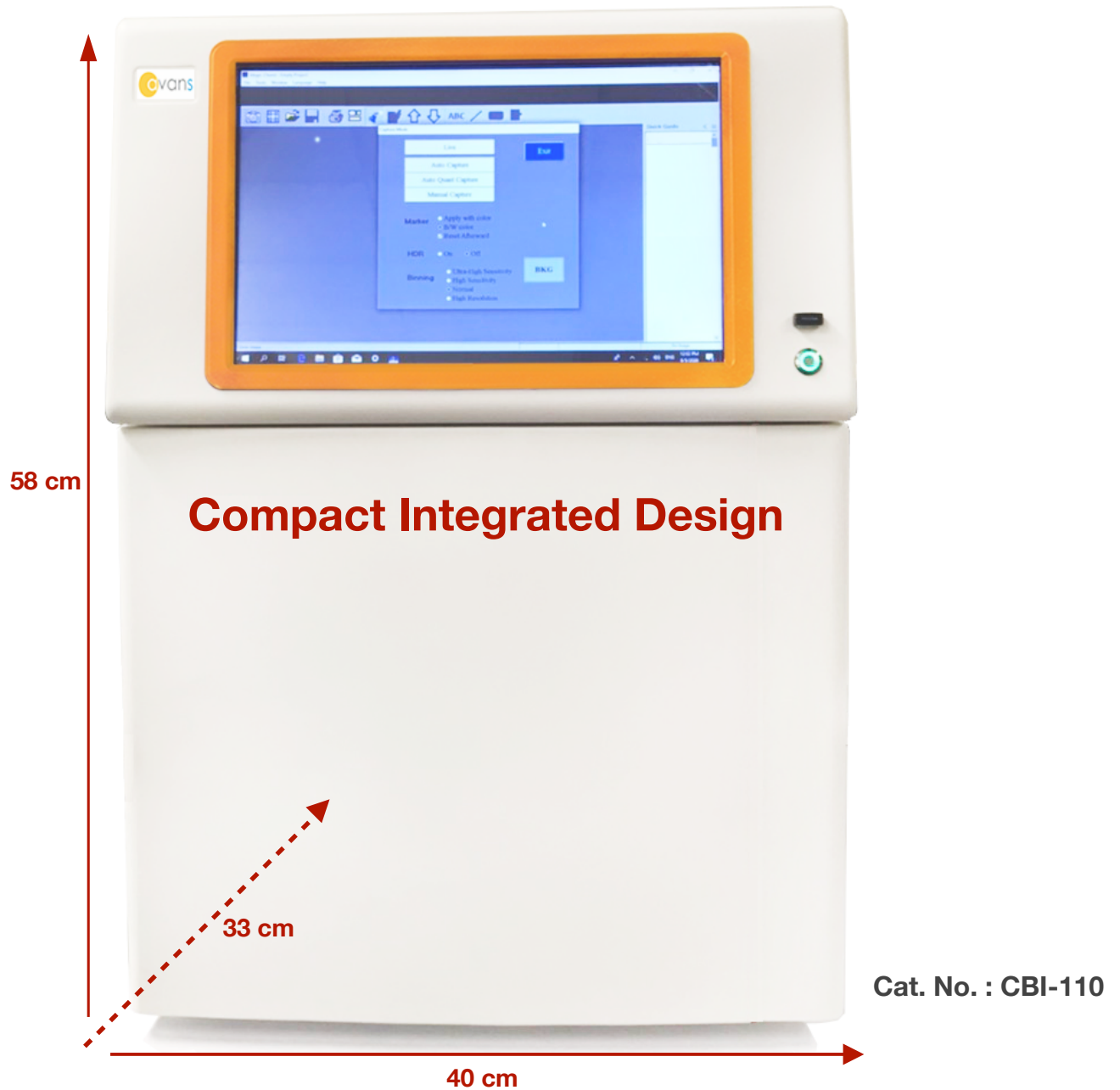


# chemiBENCH™ Chemiluminescent Imager



chemiBENCH™ is chemiluminescent imaging system having sensitive lens and advanced Peltier cooled CCD Camera for the actualization of low noise with the proprietary integrated software.

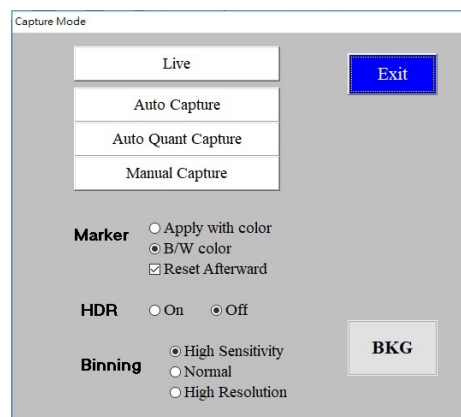
## Features

- **Multi capture mode** : Auto/ Auto Quant/ Manual capturing mode available.
- **Compact integrated design** fits neatly on every lab bench.
- **Built-in touchscreen** allows independent work of a dedicated PC.
- **Absolute sealed darkroom** enables system to capture 100% of the chemiluminescence signal.
- **Brighter images** are produced by the scientific grade camera.
- **Getting maximum signal** by manually adjust High-throughput lens.
- **High signal/noise ratio** is created by Advanced Peltier cooled CCD.

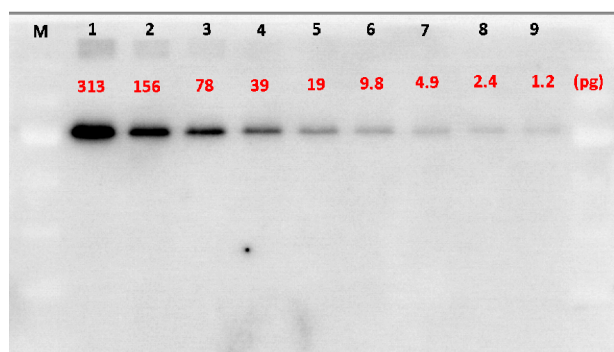
## Specifications

CCD depth	16 bit
Dynamic Range	> 4.0
Operation temperature	0 ~ 60°C
Chip size	1"
Resolution	6.0M pixels
Pixel Size	4.54um x 4.54um
Cooling	Peltier, 60°C below ambient
Lens model	f0.95/25 mm
Internal light source	White / Standard Blue / Option
Software	Standard
OS system	MS Windows 10
Dimension (mm)	40 x 33 x 58 cm (W x D x H)
Weight	19kg
Power	100-240V, 50-60 Hz

## Capture mode selection



## Image detection of transferrin at picogram level



## Image quantification

